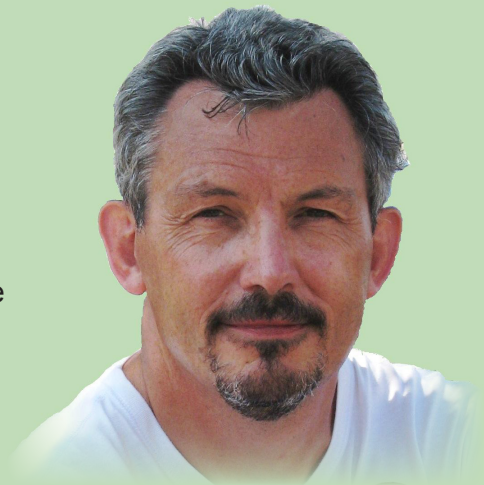


Introducing Paul Crisp, our Managing Director...

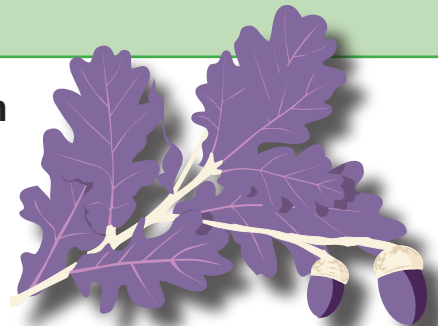
A few years ago Paul had the opportunity to visit the US Military Academy at West Point. There he discovered that all the cadets had to take a course in engineering principles whatever their main field of study. He was much taken by this view - that applying effort, and thought, and ingenuity to solving real problems through a careful analysis of the evidence was a basic skill for any professional. He would claim that this an important feature of what CUREE does for the education system and what he does for CUREE. Despite having an engineer's soul, he actually spent very little time as one (of the telecommunications flavour) before moving into education via the inner London careers service. Since then he has managed to combine experience at the front line (for instance as a college vice-principal) with time in a policy role (local authority officer, adviser to the LSC). As this suggests, before joining CUREE in 2001, he worked mostly in the post-16 sector and he continues to lead most of CUREE's work in that sector, along with directing the commercial and business support aspects of CUREE's operations. He has put his engineering tendencies to work in the field of ICT and e-learning becoming something of an expert in the use of technology to support learning. He says that, when he 'retires', he wants to combine being an IT technician in a school with endless skiing holidays.



Paul Crisp
CUREE Managing Director

Could your NQT's and early career teachers benefit from mentoring and coaching?

CUREE are running a TDA funded programme designed to further the professional development of NQT's as part of the National Priorities for CPD initiative.



The Making the Most of Mentoring and Coaching programme is based on the Effective Mentoring and Coaching (EMAC) learning resources, a set of six packs designed to support the development of mentors, coaches, CPD leaders and professional learners. The EM&C resources can be found at <http://www.curee-paccts.com/dynamic/curee57.jsp?m=65> The programme is running in three locations:

- Birmingham, 24th April and 2nd July 2008
- London, 2nd October and 11th December 2008
- Leeds, 20th January and 18th March 2009

Delegates should attend both dates and in pairs if possible. Places are **FREE** and strictly limited, so early registration is strongly recommended. For further information, registration or other programmes please visit www.curee.co.uk or contact Michael Hawkins on 024 7652 4036 for more information.

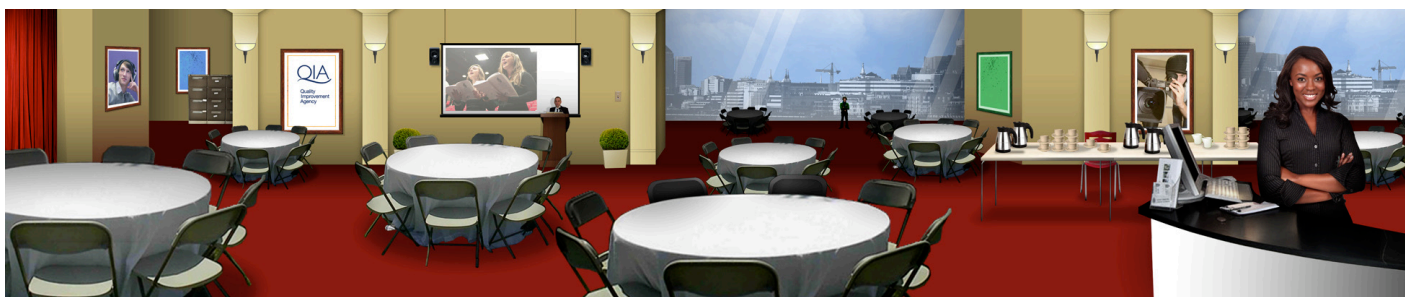
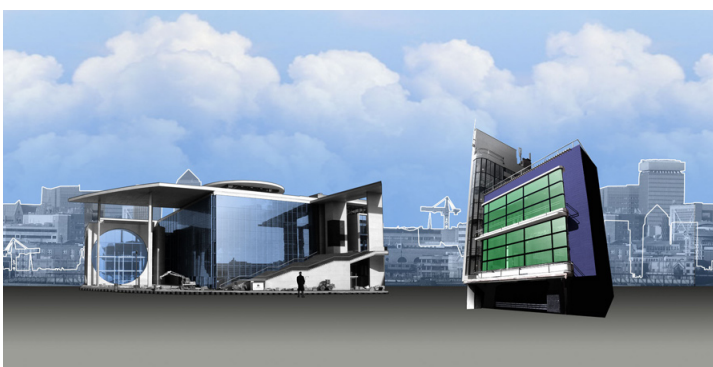


How can you make sense of QIA resources?

The Quality Improvements Agency (QIA) is an organisation involved in the improvement of quality across the post-16 and 14-19 sectors, and is involved in many programmes designed to help with teaching and learning; everything from e-learning to citizenship, from the excellence gateway to the foundation learning tier. But how can these resources be navigated?

CUREE are working with Desq, a multi-media design company, to develop an alternative interface, allowing users easily and effectively to browse the resources.

The new interface will be designed as a street, with different buildings for each subject, and rooms inside for each programme. It will allow users to access information, news, resources and forums about the post-16 sector through an attractive, user-friendly layout. You will be able to access this new facility from QIA's Excellence Gateway <http://excellence.qia.org.uk/>



Young Gifted and Talented Accredited Provider

CUREE is now an accredited provider for Young Gifted and Talented – the national programme for Gifted and Talented Education. Our Effective Mentoring and Coaching materials have been approved for inclusion on their register of products and are authorised to use their accredited provider logo.



The **Research**Informed **Practice** Site



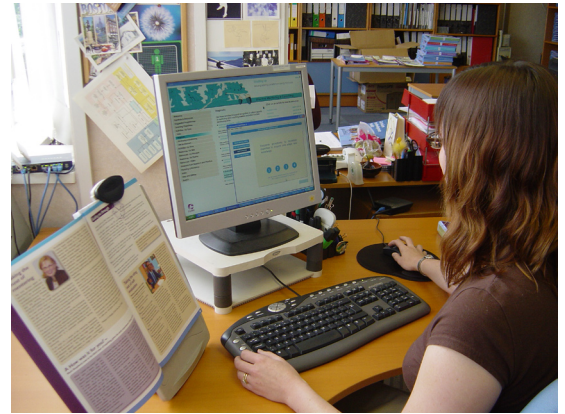
Latest TRIPS digests on the DCSF Standards website, please click on the titles below:

- Building mathematics skills in a vocational context
- Enhancing skills for inclusion: using appreciative inquiry to improve classroom dynamics
- How have five years of the National Numeracy Strategy affected Year 5 pupils' written division calculations?

Could you be CUREE's new research manager?

We are currently looking for a Research Manager at CUREE's office in Coventry. You would have the key role of finding and analysing published research and other evidence and crafting reports and other written outputs to appeal to, and be easily used by practitioners, schools leaders and education policy makers.

For further information or to apply, please e-mail kirsty.bond@curee.co.uk visit our website at www.curee.co.uk



Up coming events...

NCSL Annual Leadership Conference, 18th - 20th June
CUREE will be exhibiting at the Seizing Success 2008 event at the ICC in Birmingham. We will be providing demonstrations of the Effective Mentoring and Coaching resources, plus there will be FREE resources for you to take away. For more information, visit the [NCSL website](#)

NFER Conference 2008, 9th July
This one day conference gives delegates the chance to relate the findings of educational research to their own practice. There will be keynote speakers, discussion and workshops at the NUT headquarters in London. For more information, visit the [NFER website](#)

When you are thinking about whole school improvement, how many colleagues and students do you plan to involve in key developments?

The private sector thinks about scale in some very particular ways. Markets are thought to be saturated when an intervention has reached 24% of its target. After that, the commercial world expects to segment its efforts – in our terms personalise our plans; perhaps generic resources can only ever work for 24% of our colleagues? For everyone else there is a need to fit plans, development activities and support to the context.

What works for one key stage or one subject needs tweaking for another, what excites one group of colleagues can seem threatening to another – unless appropriate choices or support are offered.

CUREE's recent research into what's known about transferring learning and taking it to scale is being used in a wide range of contexts now. From a ministerial working group on improving intelligence for the Every Child Matters Agenda, to programmes for individual schools, colleges and local authorities, Philippa Cordingley has been introducing colleagues to planning tools and to the approaches that are linked to evidence about benefits for students and for staff. For further information, the booklet *Transferring learning and taking innovation to scale* can be downloaded at www.innovation-unit.co.uk and for information about CUREE programmes and the planning tools please contact colin.isham@curee.co.uk for more details.

